



# MicroPress Pro Series

PRODUCTION WORKFLOW SOLUTIONS



Speed  
Productivity  
Performance

# Produce Complex Documents Faster and More Efficiently



In today's competitive landscape, businesses face the constant challenge of producing high volumes of documents with complex workflow and requirements in a short time. MicroPress7.5 helps mid-to-high-volume print-on-demand environments maximise their current equipment investment by providing a fast, high-performance raster-based digital document production system that produces complex, short-run, colour and black and white documents. The solution comes with an intuitive graphic user interface, an industry-leading architecture, late stage editing tools, workflow automation and features that boost productivity for crunch times.

## Get Cutting-Edge Productivity

MicroPress' Production, Professional and Prodigy servers maximise productivity in demanding production environments. The solution's make-ready tools also optimise job throughput and produce unmatched quality. In addition, the flexible, scalable design provides a growth path to meet future requirements and allows RIPs and software to be easily added.

## Extend Solutions' Colour Functionality

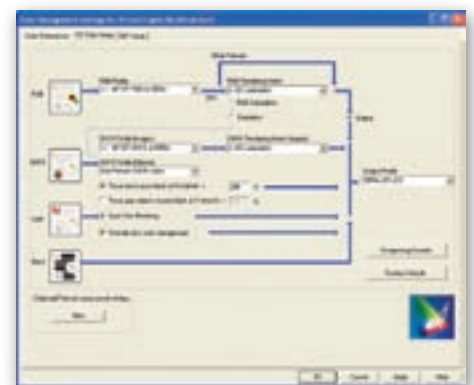
MicroPress' TrueColor extends users' colour functionality through several features. Image Editing provides an intuitive way to adjust colours fast with its on-screen feedback. Gammatic calibrates single, multiple and clustered devices to a universal standard for consistent colour output, while ConTune ensures that documents which are printed across multiple engines appear identical.

For accurate, high-quality colour, TrueColor's colour management graphic user interface gives users complete control by allowing them to select ICC profiles and rendering intent per image type. Its ICC Profile Processor saves users time by automatically recognising RGB, CMYK, LAB and spot colours and intelligently maps them to the correct CMYK values for each print engine. The solution's newest feature, EFI Spot On with Substitute Colors, accurately reproduce named colours on printers for perfect logos, letterheads and more, ensuring accurate corporate colours every time.

MicroPress offers TrueCurves for universal curve creation, making the process quick and easy with mouse-drag functionality and anchor points for sophisticated fine-tuning. It also offers multiple proofing emulations per printer, allowing a single engine to produce various proofing emulations by selecting printer queues with different colour setups.



Colour Editing generates exceptional print output.



ICC Color Set Up produces accurate and consistent colour



## Use Expert Tools to Speed up your Digital PrePress Work

In the print-on-demand world, last-minute changes are inevitable. MicroPress offers several prepress tools to get the job done. Its interface increases operator efficiency by offering device features in a consistent format that improves productivity and reduces the learning curve associated on new and different engines.

For greater productivity, TruePrint drives each device at its maximum speed, regardless of page complexity or volume. TrueRecover increases engine performance by automatically providing page and job level error detection and recovery across one or multiple devices. In addition, TrueCluster increases engine output by printing multiple and large jobs simultaneously and quickly, while PowerRIP maximises throughput by allowing simultaneous processing of multiple files, eliminating bottlenecks.

## Harness Make-Read Tools to Streamline Workflow

MicroPress' TrueEdit dramatically streamlines workflow by automating manual processes such as hand collating, tab inserting, document renumbering and booklet creating. Its make-ready tool suite also enables operators to prepare documents that have already been RIPPed for printing.

For advanced tab functions, Tab Editor allows users to edit and update tabs, while Tab Builder speeds up the document production process by making it quick and easy to create tab pages and to place text on tabs.

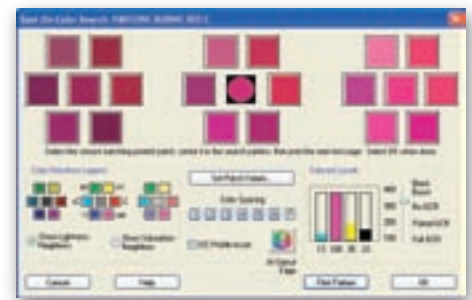
MicroPress' Layout Modes allows the operator to quickly view document layout for easy page level settings and tab insertion, saving precious time. In addition, the Page-Level Media Selection feature allows users to select media from page properties for individual pages, page ranges or selected criteria such as paper size and media type. Micropress also offers powerful media catalog with WYSIWYG editing views with page and chapter level control.

## Benefit from Advanced Job Management Capabilities

MicroPress' advanced job management features provide complete engine control to optimise any workflow with tools such as TrueScript, which automates frequently performed tasks.

For fast learning, the newly designed PrintStation Manager comes with an intuitive graphic user interface that increases productivity, while decreasing the learning curve.

For exporting and managing media entries using familiar terminology, there's Media Catalog, which also provides seamless integration to EFI Digital StoreFront™. In addition, MicroPress comes with the Color and Black & White Split feature to automatically direct pages to the appropriate devices, eliminating need for manual collation and reducing costs.



EFI Spot On optimises printing of named colours

## Take a look at the most complete production workflow single-source solution in the industry! MicroPress Pro Series 7.5 Features

EFI's portfolio of integrated solutions increases productivity and improves your bottom line. Find out more at [www.efi.com](http://www.efi.com).

Version:	Prodigy	Professional	Production
Scalability	Drives a single engine	Clusters up to 4 engines	Drives up to 12, clusters & engines
TruePrint	●	●	●
TrueCluster	N/A	●	●
TrueRecover	●	●	●
MicroPress RIP	●	●	●
PowerRIP	N/A	○	●
TruePCL	○	●	●
TrueColor	*Color Engine	●	●
ColorWise Spot-On with Substitute Color	●	●	●
TrueEdit	●	●	●
Remote TrueEdit	●	●	●
TrueScript	○	○	●
Auto Archive	●	●	●
Annotations	●	●	●
OCR	●	●	●
Calculate toner coverage	●	●	●
Export job info to third-party billing application	●	●	●
MicroSpool	○	●	●
Microlmager	○*(Separate PC)	○*(Separate PC)	●
Hot Folders	●	●	●
SoftProof	●	●	●
Paper Simulation	*Color Engine	●	●
Multiple Plate Printing	*Color Engine	●	●
Automatic Solid color, RGB, CMYK, Lab	*Color Engine	●	●
Digital StoreFront	○*(Separate PC)	○*(Separate PC)	○*(Separate PC)

● = Standard ○ = Optional

ColorWise, Command WorkStation, DocBuilder Pro, DocStream, EDOX, EFI, Fiery, the Fiery logo, Fiery Driven, the Fiery Driven logo, OneFlow, PrinterSite, PrintFlow, PrintMe, PrintSmith, PrintSmith Site, Prograph, Proteus, RIP-While-Print and VUTEK are registered trademarks of Electronics for Imaging, Inc. in the U.S. Patent and Trademark Office and/or certain other foreign jurisdictions. Bestcolor is a registered trademark of Electronics For Imaging GmbH in the U.S. Patent and Trademark Office. ADS, AutoCal, Auto-Count, Balance, BioVu, Build, ColorCal, Digital StoreFront, Estimate, Fiery Link, Fiery Prints, Fiery Spark, FreeForm, Hagen, Intelligent Device Management, Jetrion, the Jetrion logo, Logic, MicroPress, Printcafe, PSI, PSI Flexo, RIPChips, Scan, SendMe, Splash, Spot-On, VisualCal, WebTools, the EFI logo, the Fiery Prints logo, and Essential to Print are trademarks of Electronics for Imaging, Inc. Best, the Best logo, Colorproof, PhotoXposure, Remoteproof, and Screenproof are trademarks of Electronics For Imaging GmbH. All other terms and product names may be trademarks or registered trademarks of their respective owners, and are hereby acknowledged. © 2007 Electronics for Imaging

EFI Ltd, Stonebridge House, Padbury Oaks, Old Bath Road  
Longford, Middlesex UB7 0EW, United Kingdom

tel +44 [0]1753 283676  
fax +44 [0]1753 283636

[www.efi.com](http://www.efi.com)

U068.03.07\_UK